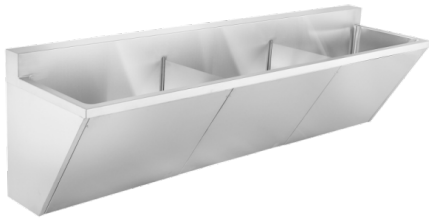


SSU3-00 Scrub sink, triple compartment

MODEL RANGE: HEALTHCARE | SSU3-00

Special hospital equipment | Surgical scrub stations



Triple compartment surgical scrub station. 18 gauge (1.2 mm), type 304 (CNS 18/10) stainless steel. Polished #4 satin finish. Radius coved bowl corners. Access panel for service and maintenance. Removable dividers. 1 1/2" (38 mm) grid strainer. Please specify hole drilling requirement when ordering. Certified to ASME A112.19.3-2008 / CSA B45.4-08.

Please allow 4 weeks for delivery. Faucets not included with base model, see options. Please specify hole drilling requirement when ordering.

Model Options:

SSU3-10

AC powered hands-free faucets (3 pieces)

MIX-LF, thermostatic mixing valve (3 pieces)

SSU3-11

AC powered hands-free faucets (3 pieces)

MIX-LF, thermostatic mixing valve (3 pieces)

AC powered hands-free soap dispenser (3 pieces)

23 x 90" Overall. 17 1/2 x 87 x 12" Bowl. (FB x LR x D).

584 x 2286 mm Overall. 445 x 2210 x 305 mm Bowl. (FB x LR x D).

Technical data

Bowl height	12 inch
Bowl width	17 1/2 "
Bowl depth	87 "
Overall depth	23 "
Overall height	26 "
Overall width	90 "
Material	Stainless steel
Material code	1.4301 Chrome Nickel steel V2A
Waste hole position	Center
Bowl finish	Satin finish
Number of bowls	3.00000
Overflow	No
Splash back	Yes
Number of tap holes	0.00000
Type of basin	Triple compartment

PROJECT INFORMATION

Item Location
Project Number
Quote Number
Notes

ENGINEER'S APPROVAL