

WATER COOLER INSTRUCTIONS



MODELS: KEP16FAWHD, KEP16FAWHDCP, KENSFD16WHD,
KENSFD16WHDCP

1. INSPECTION

Inspect the carton and water cooler for evidence of rough handling and concealed damage. Damage claims should be filed with the carrier.

2. OVERLOAD PROTECTION

The compressor motor is equipped with an automatic reset protector which will disconnect the motor from the line in case of an overload.

3. LUBRICATION

This unit is equipped with a hermetically sealed compressor and requires no additional lubrication.

4. TO PUT WATER COOLER INTO SERVICE

- a) **NOTE:** The following states require a licensed plumber to install cooler; AR, GA, MA, MI, OK, RI, SC, SD, TX, VT and WI. CA, KS, MN, NM and OR allow for a state-registered installer or contractor as well. State and local plumbing codes may prohibit the use of saddle tapping valves for water line connection in some applications. All connections must conform to applicable plumbing codes.
- b) The back of the water cooler may be installed as close to the wall as the plumbing will allow.
- c) Install a waste trap in the drain line and a shut-off valve in the water supply line.
- d) To fill the cold water tank, open the shut-off and bubbler valves.
- e) Check the available power supply against the water cooler data plate to assure correct electrical service. Connect electrical supply to hazardous duty model in accord with local and National Electrical Code for the class and group requirements of the specific hazardous location.

5. WATER VALVE ADJUSTMENT

The valve is factory set and will not ordinarily require adjustment. If adjustment is required, turn the adjusting stem of the valve counterclockwise to increase flow, clockwise to decrease flow. Do not adjust more than 1/8 turn at a time and never more than 1/2 turn total in either direction.

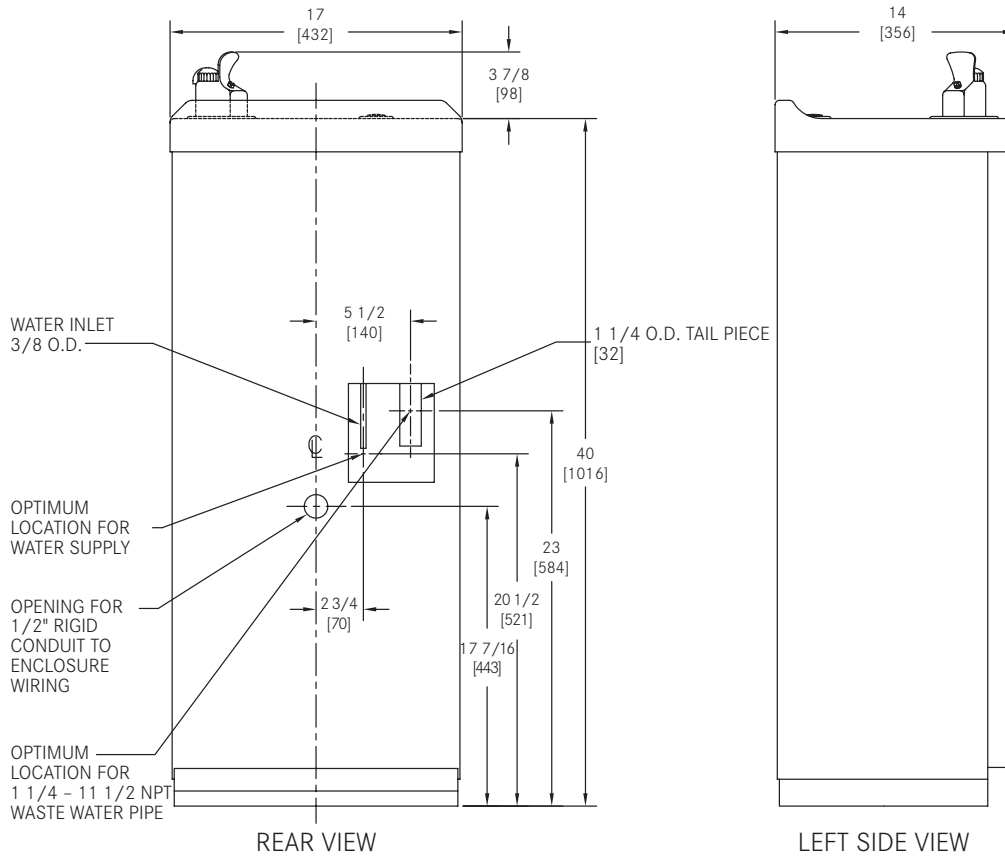
6. TO DISCONTINUE USE OF WATER COOLER

- a) Disconnect the power supply.
- b) Close the water shut-off valve.
- c) Provide container to catch water and remove drain plug(s) from tank(s).
- d) Remove or open bubbler valve and, if any, the glassfiller.
- e) ALWAYS DRAIN ALL WATER WHEN FREEZING TEMPERATURES ARE ANTICIPATED AND BEFORE SHIPPING THE WATER COOLER.

WARNING The warranty and the Underwriters' Laboratory listing for this machine are automatically voided if this machine is altered, modified, or combined, or combined with any other machine or device. Alteration or modification of this machine may cause serious flooding and/or hazardous electrical shock or fire. EXCEPT AS SET FORTH HEREIN, THE MANUFACTURER MAKES NO OTHER WARRANTY, GUARANTEE OR AGREEMENT EXPRESSED, IMPLIED OR STATUTORY, INCLUDING ANY IMPLIED WARRANTY OR MERCHANTABILITY OR FITNESS FOR A PARTICULAR PURPOSE.

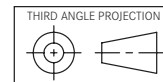
WATER COOLER INSTRUCTIONS

MODELS: KEP16FAWHD, KEP16FAWHDGP, KENSFD16WHD,
KENSFD16WHDGP



ALL DIMENSIONS ARE IN INCHES.

DIMENSIONS IN BRACKETS []
ARE IN MILLIMETERS.



ROUGHING-IN
AND
DIMENSIONAL DRAWING

Franke Kindred Canada Limited
1000 Franke Kindred Road
Midland, ON L4R 4K9
CANADA



Tel. 1-866-687-7465
Fax 1-800-361-8408
www.franke-commercial.com