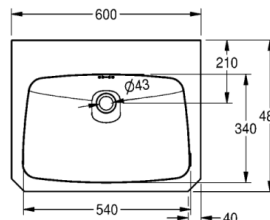
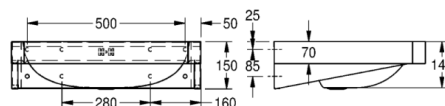


WT600C-8 Wall Hung, designer, 19 gauge, overflow

MODEL RANGE: TUBS-BASINS | WT600C-8

Hand wash basins | Wash basins



Single wash basin for wall mounting, stainless steel, surface satin finished, material thickness 1 mm (19 gauge), seamless welded bowl with diameter 550x350x145 mm, rectangular shape, 90 mm tap ledge, front panel with 45° corner edges, pre-welded mounting brackets, distance between the centre lines of the fixing holes conform to EN 31, including screws and dowels.

Wheelchair accessible: meets ADA (Americans with disabilities act guidelines) and ANSI A117.1 (Accessible and usable buildings and facilities). Check local codes to ensure compliance. Optional shroud also available (refer to specification page WT-RS)

Rear overflow for wheelchair accessibility, accepts 1 1/4 in. (32 mm) waste - not included.

Model Options:

WT600C-8, Custom (non returnable), specify hole drilling

WT600C-8/1, 1 faucet hole 1 3/8 in. (35 mm).

Technical data

Bowl height	5 3/4 inch
Bowl width	13 3/8 "
Bowl depth	21 1/4 "
Material thickness	1/16 mm
Overall depth	18 7/8 "
Overall height	5 15/16 "
Overall width	23 5/8 "
Waste hole projection	8 1/4 mm
Material	Stainless steel
Material code	1.4301 Chrome Nickel steel V2A
Tailor made	No
Tap ledge	Yes
Type of mounting	Wall mounting
Waste hole position	Center back
Bowl finish	Satin finish
Bowl shape	Rectangle
Number of bowls	1.00000
Overflow	Yes
Rear upstand	No
Surface finish	Satin finished
Number of tap holes	0.00000
Waste size	DN 32

PROJECT INFORMATION

Item Location	
Project Number	
Quote Number	
Notes	

ENGINEER'S APPROVAL

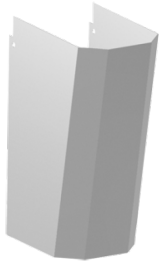


WT600C-8 Wall Hung, designer, 19 gauge, overflow

MODEL RANGE: TUBS-BASINS | WT600C-8

Hand wash basins | Wash basins

Accessory Optional



WT-RS Shroud, removable, 18 gauge

2000103036

WT-RS
